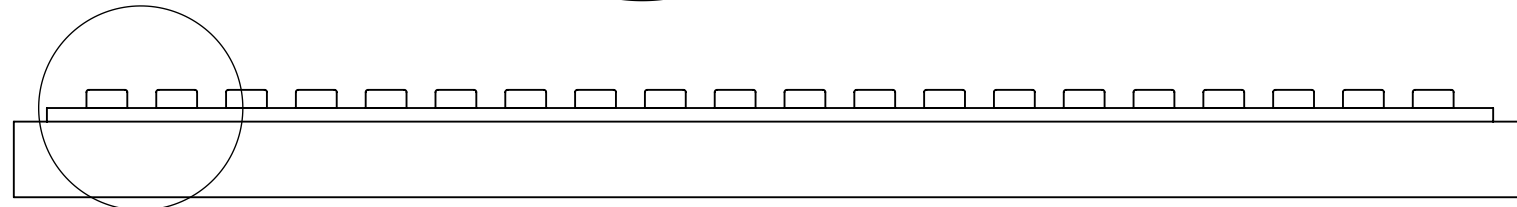
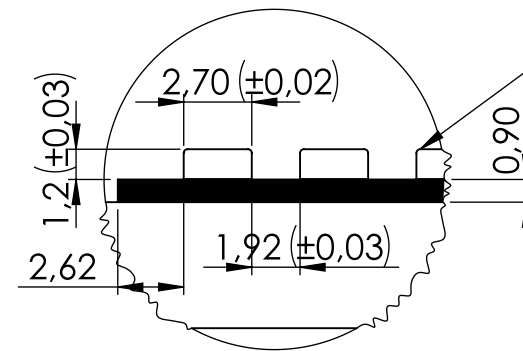
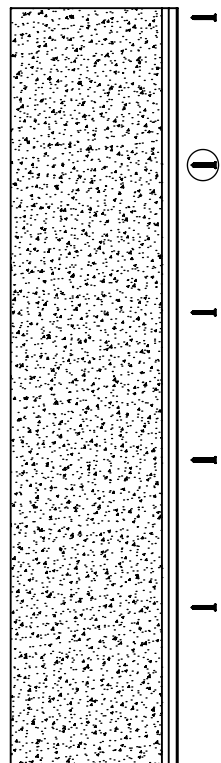


AGT ACOUSTIC PANEL INSTALLATION GUIDE

Our product is assembled
on 9 mm felt at specified
intervals and sent to you.

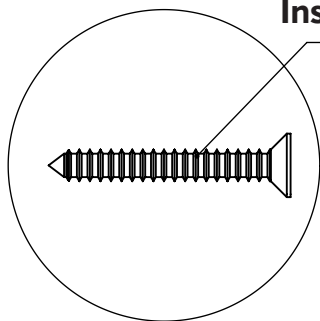


A

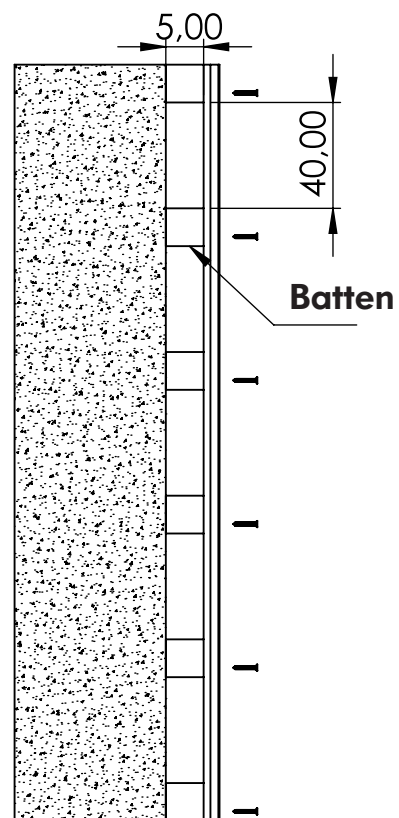


Seamless Mounting
Type A

3,5x35mm
Installation Screw

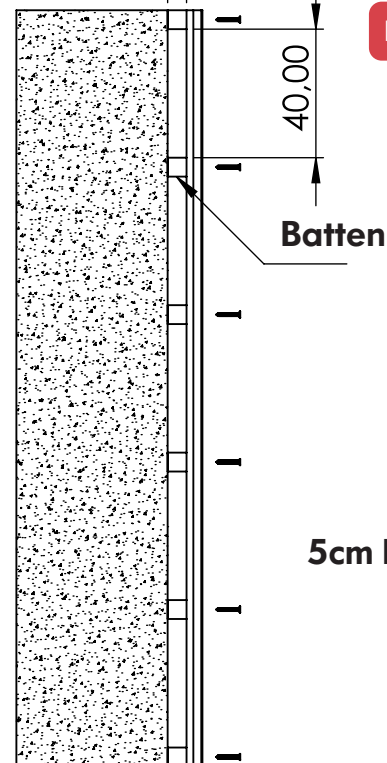


5cm Installation
Type D-50



D-50

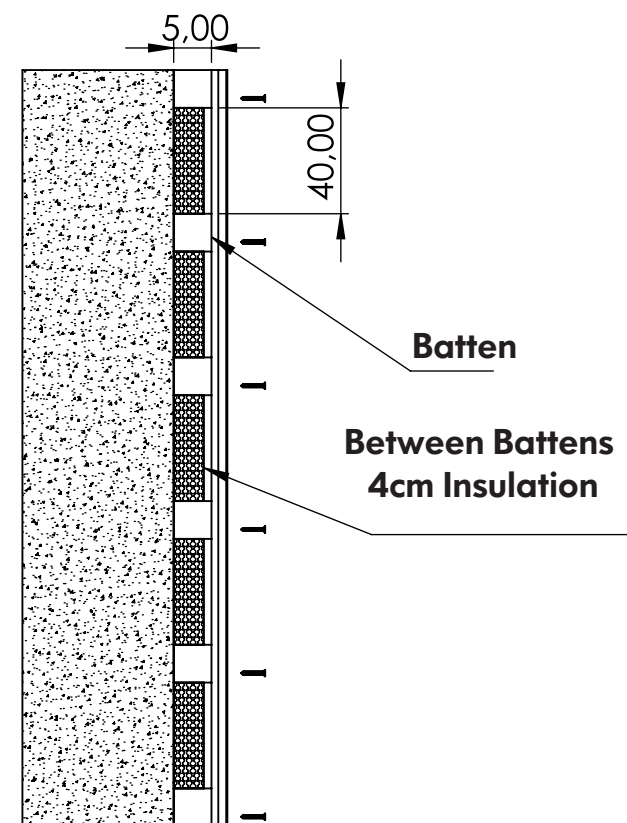
2,50



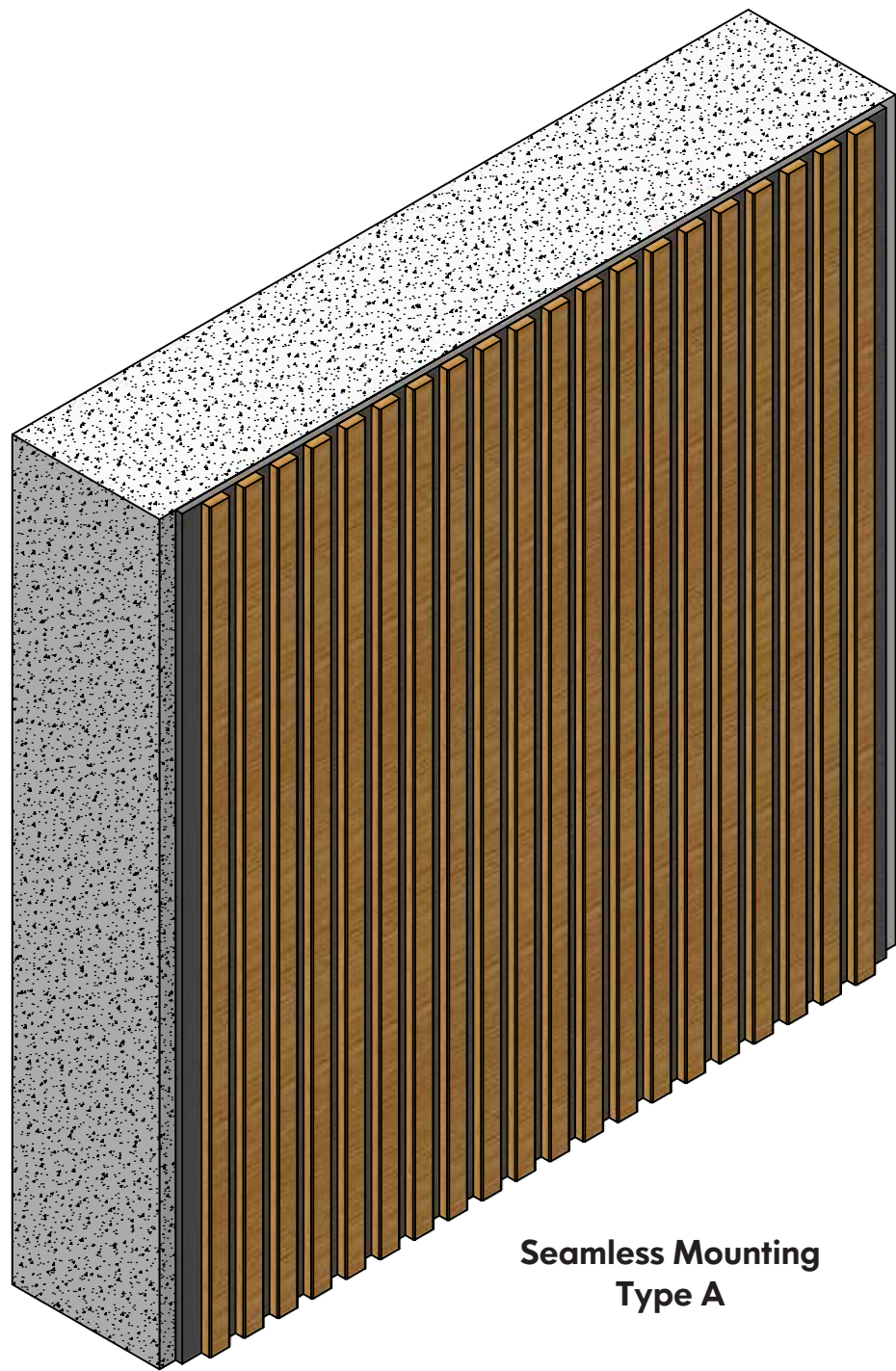
D-20

A Distance of 40 cm
Between the Battens is
Recommended

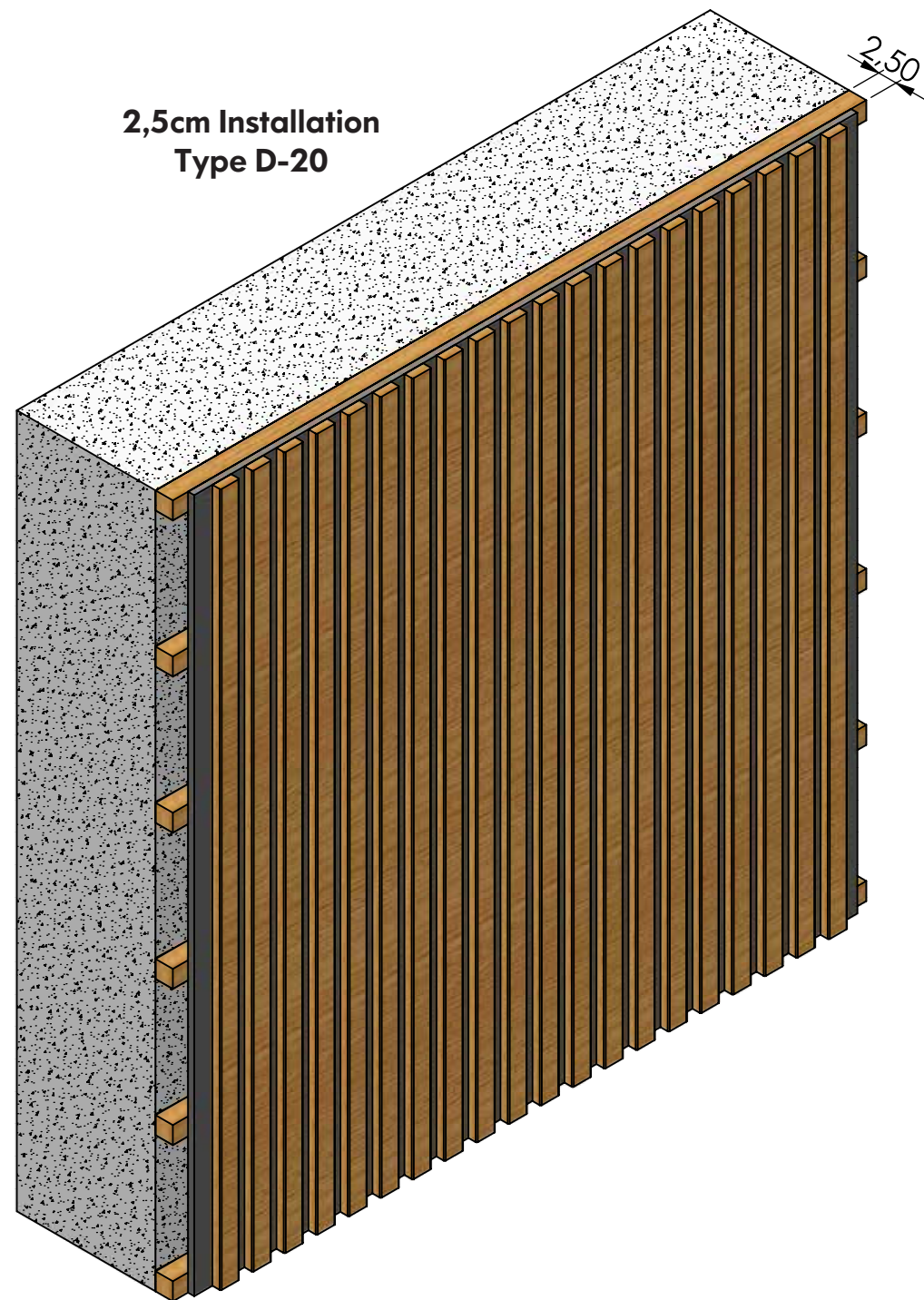
5cm Installation + 4cm Insulation
Type D-50+



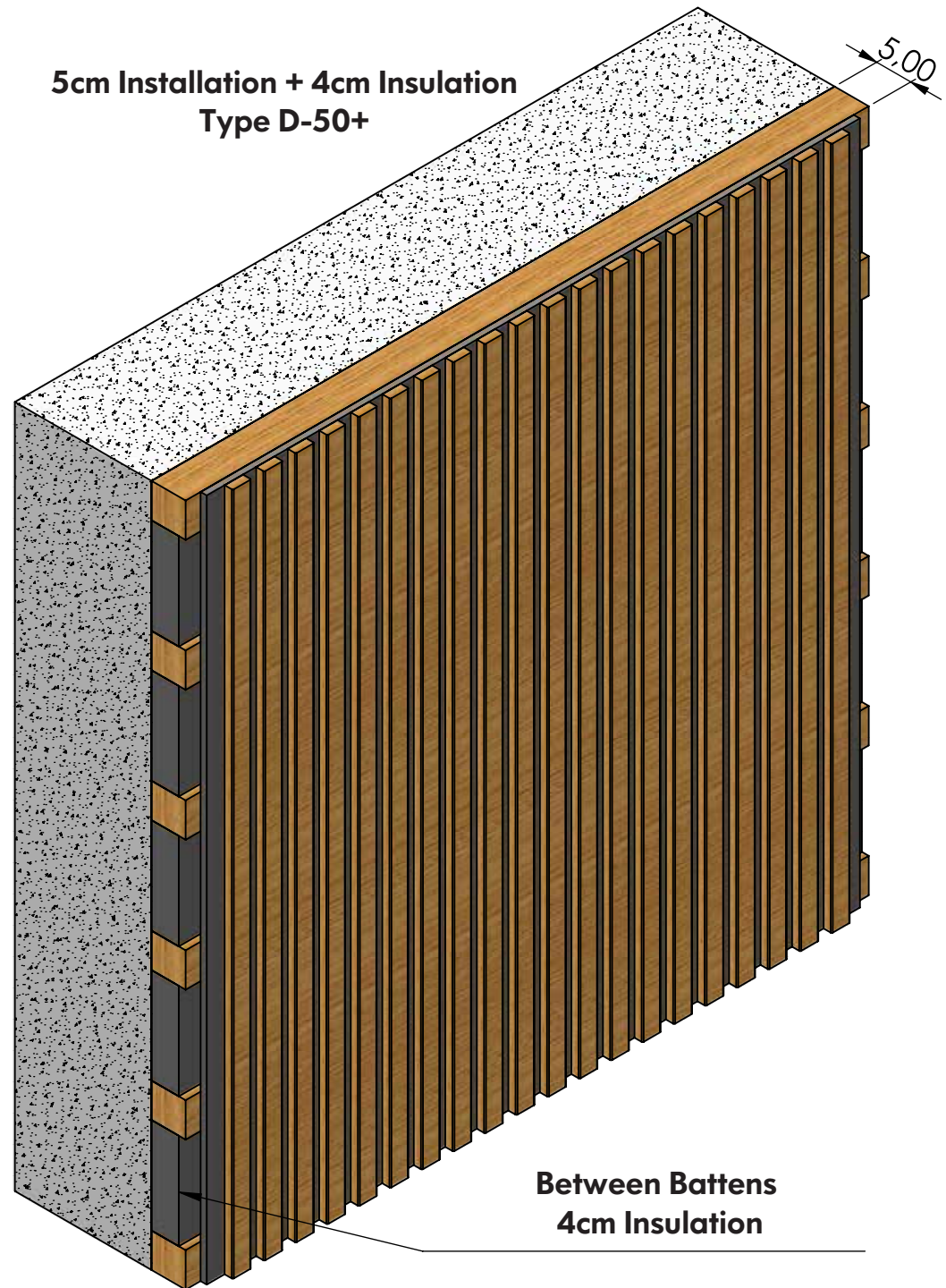
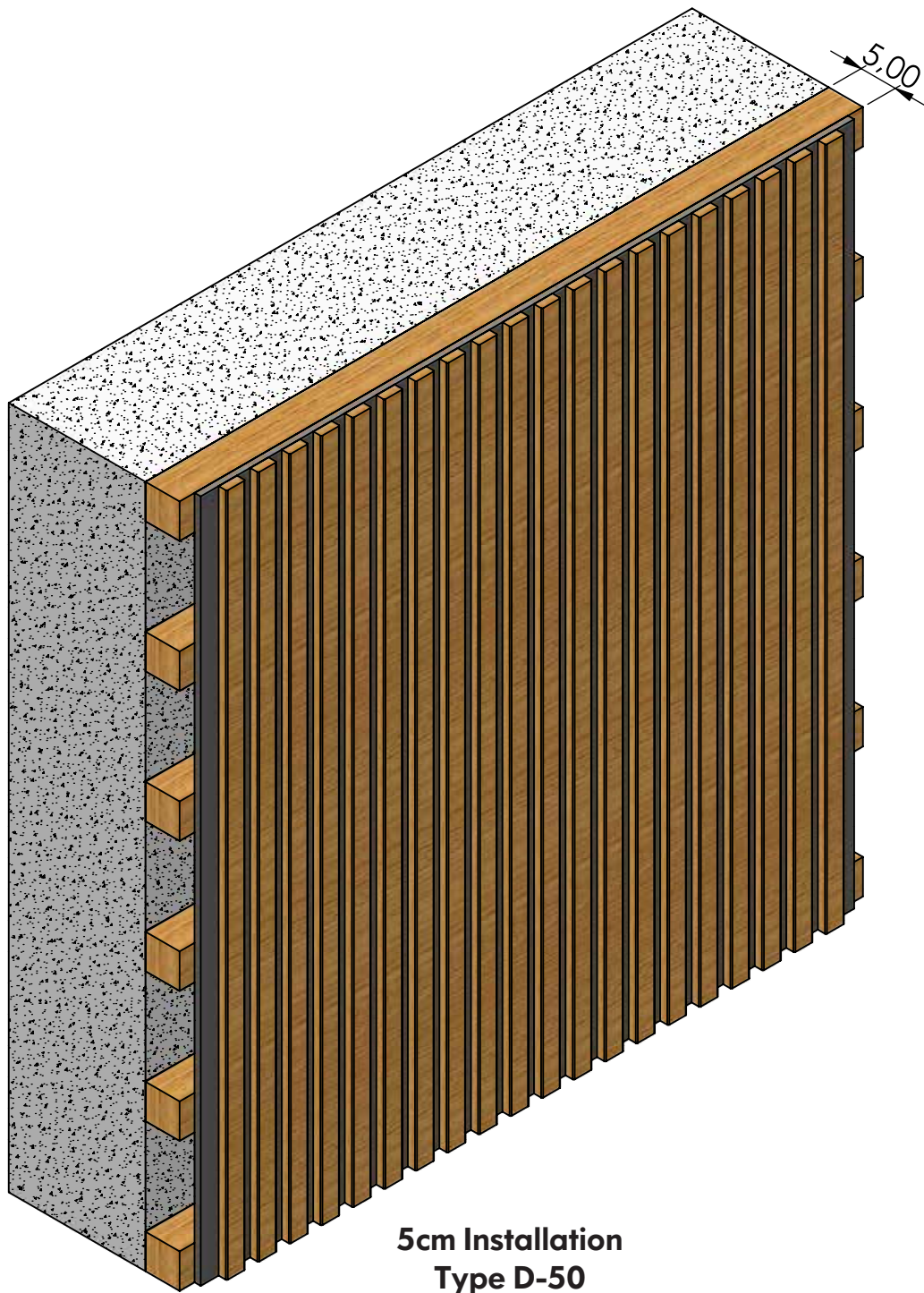
D-50+



**Seamless Mounting
Type A**



**2,5cm Installation
Type D-20**



**3,5x35mm
Installation
Screw**

